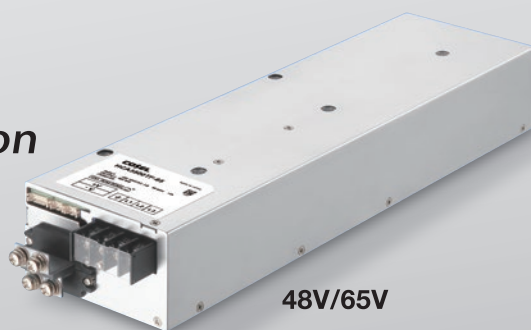




Universal 3-phase AC-DC Power Supply

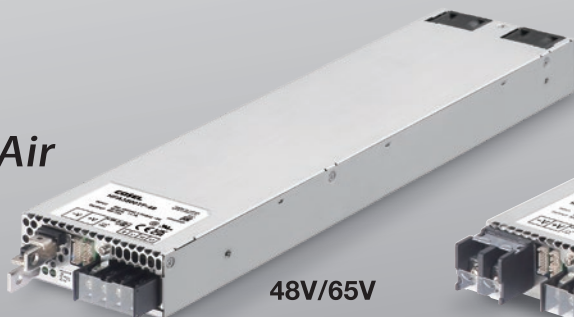
Universal 3-phase input (Delta and Wye configurations)

HCA series
Conduction
Cooling



48V/65V

HFA series
Forced Air
Cooling



48V/65V

NEW



90V/130V/200V/300V

3500W

HFA/HCA

series

HFA/HCA series

**Wide input range : 3 ϕ 200-480VAC
3500W Power Supply**

Forced Air Cooling / Conduction Cooling

Offered in both forced-air cooled and conduction-cooled configurations.

HFA series

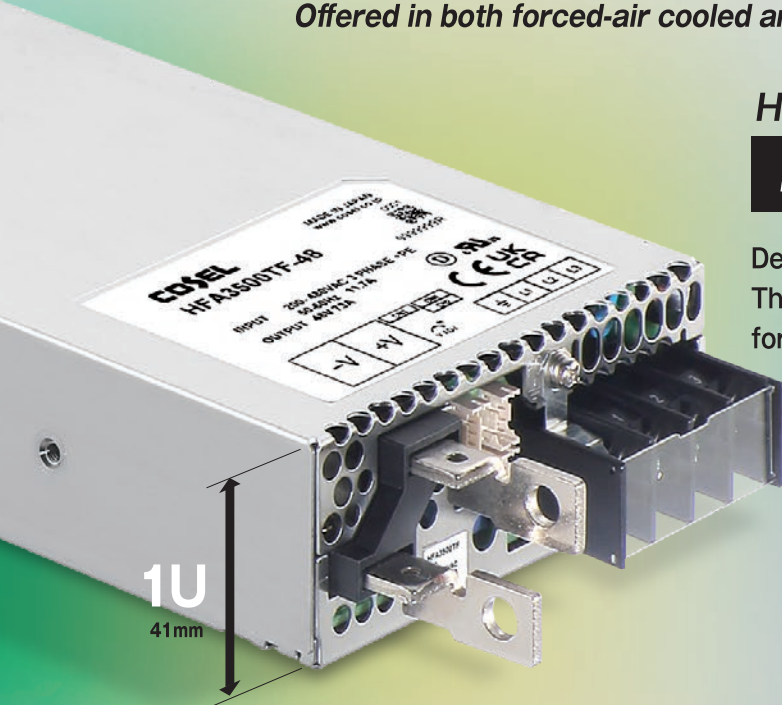
Forced Air Cooling Type

Designed for effective heat dissipation. The forced-air cooled version provides a practical solution for installations without water-cooling systems.

Low Profile

High Power Density

Simple Heat Dissipation



48V/65V Appearance: Output Interface: Bus Bar

*Output Interface of 90V to 300V models: Terminal Block

HCA series

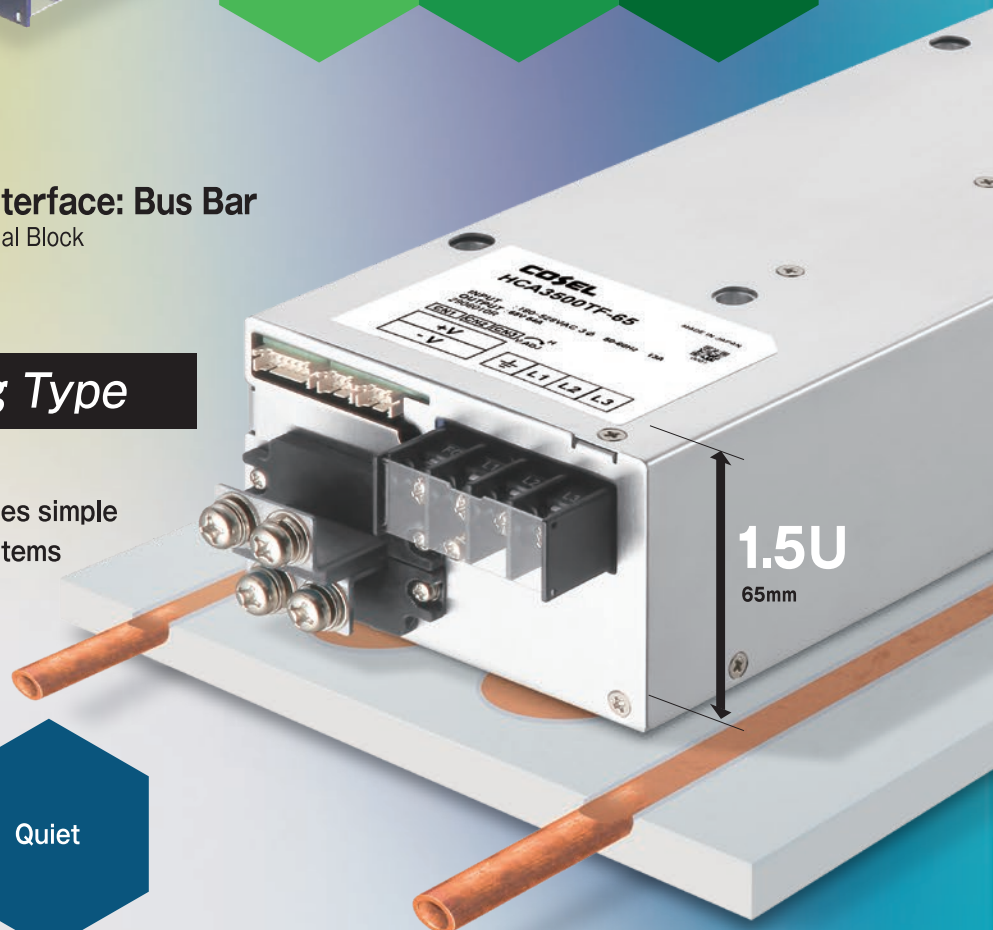
Conduction Cooling Type

Ideal for harsh environments. The conduction-cooled design enables simple implementation of highly rugged systems and can be used water-cooled heat sinks for laser modules or high-frequency amplifiers.

To withstand Harsh Environment

Improving the Derating Curve

Quiet



For High-power Industrial Applications

Such as MRI, Plasma processing, and CO2 Laser Driver



For Design of RF amplifier

Covers between 48V to 400V*

HFA and HCA series are available with the existing 48 or 65VDC input. HFA series has newly expanded to 90, 130, 200, and 300VDC input models. This is useful for RF amplifiers on MRI and Laser applications.

*HFA3500TF-300: Maximum output of adjustable output voltage

Maximum Efficiency 94.5%

The high efficiency has been achieved with wide bandgap semiconductors (SiC).

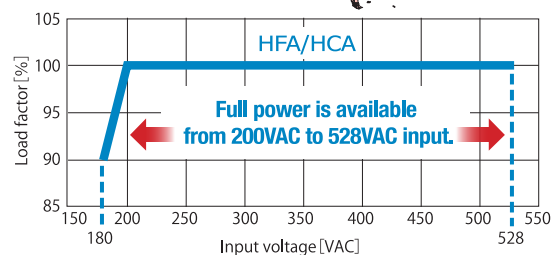
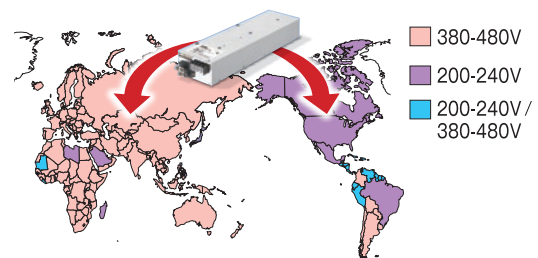
Universal Three-phase Input

200VAC - 480VAC

Available for any 3-phase input in the world

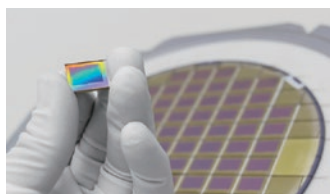
HFA and HCA series support both Delta and WYE three-phase input configurations, enabling a common power supply platform across different power systems.

High efficiency has been achieved and the full power is available at 200VAC input by suitable heat dissipation technology.



SEMI-F47

Complied with SEMI-F47. Suitable for Semiconductor Processing Applications.



Parallel and Series Operation

Parallel 10 units max.

Series 1,000V max.*

Flexible combinations allow a wide range of output voltage and power configurations to suit many applications.

*Isolation between Output and FG is 2,000VAC. Please contact COSEL's sales representative for details of Safety Standard Approvals.

Target Applications

- Laser
- Plasma processing
- MRI
- Induction Heating system
- High-frequency amplifier
- Electrical Discharge machine
- Thermo-controller
- EV, Battery machine
- Industrial Printer

HFA/HCA series



"Delivering power to factories around the world."



HFA (Forced Air Cooling)

HCA (Conduction Cooling)

Model	HFA3500TF						HCA3500TF	
	48V	65V	90V	130V	200V	300V	48V	65V
Output Voltage	48V	65V	90V	130V	200V	300V	48V	65V
Input Voltage	3φ 180 - 528VAC (Derating is required.)							
Output Current	73A	54A	39A	27A	17.5A	11.7A	73A	54A
Output Power	3504W	3510W	3510W	3510W	3500W	3510W	3504W	3510W
Adjustable Output Voltage Range*	24 - 55.2V	32.5 - 74.75V	45 - 105V	65 - 170V	100 - 260V	200 - 400V	33.6 - 55.2V	45.5 - 74.75V
Power Factor (200 / 400VAC, I _o =100%)	0.95 / 0.94							
Efficiency (200 / 400VAC, I _o =100%)	91% / 93%	92% / 94%	92.5% / 94%	93% / 94.5%	93% / 94.5%	93% / 94.5%	91% / 93%	92% / 94%
Leakage Current (480VAC, 60Hz, I _o =100%)	3mA max.							
Operating Ambient Temperature	-10 to +70°C (Ambient)						0 to +55°C (Base plate) -10 to +70°C (Ambient)	
Safety Standard Approvals	UL62368-1, C-UL (CAN/CSA-C22.2 No62368-1), and EN62368-1							
Conducted Noise	Complied with FCC Part15-A, FCC Part18-A, CISPR11-A, EN55011-A, EN55032-A, and VCCI-A							
Size (W x H x D) (Excluding terminal blocks and screws.)	110 x 41 x 468 mm (4.33 x 1.61 x 18.43 inches)						110 x 65 x 420 mm (4.33 x 2.56 x 16.54 inches)	
Weight	3kg max.						5kg max.	

*For details, please see our WEB site.

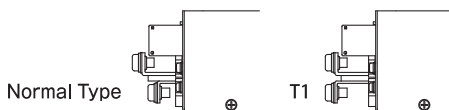
Option

R: Remote ON/OFF. Reversed Logic.

G: Low Leakage Current

T1: Another Output Terminal Shape (No Step Type)

*Only HCA



I4: MOD BUS Communication

Option part of HCA series

Water-cooled plate F-HCA-F1



Head Office COSEL CO., LTD.

1-6-43 Kamiakae-machi, Toyama 930-0816, Japan [URL https://www.cosel.com/en/](https://www.cosel.com/en/)

Worldwide Sales/Support Network

[AMERICA]

COSEL U.S.A., INC.

[Phone +408-980-5144](tel:+14089805144)

[E-mail sales@coselusa.com](mailto:sales@coselusa.com)

[URL https://coselusa.com](https://coselusa.com)

《Engineering and Technical Support》

[E-mail techsupport@coselusa.com](mailto:techsupport@coselusa.com)

[EUROPE]

COSEL EUROPE GmbH

[Phone +49-69-95 00 79-0](tel:+49699500790)

[E-mail sales@coseseurope.eu](mailto:sales@coseseurope.eu)

[URL https://www.coseseurope.eu](https://www.coseseurope.eu)

《Engineering and Technical Support》

[E-mail techsupport@coseseurope.eu](mailto:techsupport@coseseurope.eu)

[ASIA]

COSEL ASIA LTD.

[Phone +852-2305-2712](tel:+85223052712)

[E-mail sales@coselasia.com](mailto:sales@coselasia.com)

[URL https://www.coselasia.com](https://www.coselasia.com)

COSEL (SHANGHAI) ELECTRONICS CO., LTD.

[Phone +86-21-6440-0381](tel:+862164400381)

[E-mail sales@coselasia.cn](mailto:sales@coselasia.cn)

[URL https://www.coselasia.cn](https://www.coselasia.cn)