

1	Standard Connection Method	DPG-8
1.1	Standard connection method	DPG-8
1.2	External components	DPG-8
1.3	Wiring input pin	DPG-8
1.4	Connection of loaded circuit	DPG-8
1.5	Heatsink	DPG-9
2	Function	DPG-9
2.1	Overcurrent protection	DPG-9
2.2	Overvoltage protection	DPG-9
2.3	Thermal protection	DPG-9
2.4	Auxiliary power supply circuit for external signal (AUX)	DPG-9
2.5	Enable signal (ENA)	DPG-9
2.6	Isolation	DPG-9
3	Series and Parallel Operation	DPG-9
3.1	Series operation	DPG-9
3.2	Parallel operation	DPG-9
4	Cleaning	DPG-9

1 Standard Connection Method

1.1 Standard connection method

■ To use DPG Series, connection shown in Fig.1.1 and outside attached components are required. Through this connection, DC output voltage can be obtained from AC input voltage. AC input voltage and DC output voltage are not insulated.

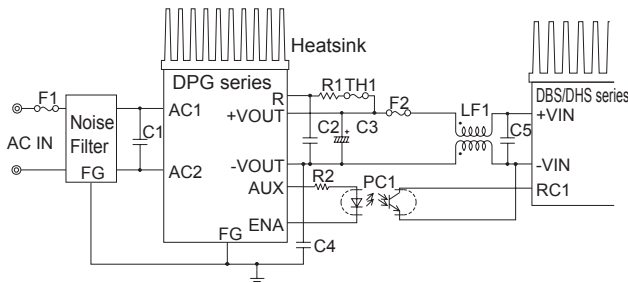


Fig.1.1 Standard connection method

Table 1.1 External components

No.	Symbol	Component	Required characteristics
①	F1	Input fuse	15A or less Slow-blow type
②	F2	Output fuse	10A or less Normal-blow type
③	C1	Input capacitor	2 μ F or more, Rated ripple current : 5A or more, Film capacitor, Safety approved type
④	C2	Output capacitor	1 μ F or more, Rated ripple current : 4A or more, Film capacitor
⑤	C3	Holdup capacitor	220 - 2200 μ F Aluminum electrolytic capacitor
⑥	C4	Y-capacitor	2200pF Safety approved type
⑦	R1	Inrush current protection resistor	4.7 - 22 Ω Wirewound Resistor with Thermal Cut-Offs

1.2 External components

- F1** Input fuse : 15A or less
Fuse is not built-in at input side. In order to secure the safety, use the slow-blow type fuse F1 (15A or less).
- F2** Output fuse : 10A or less
Since over current protection is not built-in, use the normal-blow type fuse F2 (10A or less) at output side to secure the safety.
- C1** Input capacitor : 2 μ F or more
Install an external capacitor C1 (2 μ F or more) to keep stable operation and to avoid failure. Use AC250V rated voltage with safety approved and over 5A rated ripple current.

- C2** Output capacitor : 1 μ F or more
Install an external capacitor C2 (1 μ F or more) as close as possible to the output pins to keep stable operation and to avoid failure. Use DC400V or higher rated voltage and over 4A rated ripple current capacitor.
If the ambient temperature is below -20°C, Holdup capacitors ESR increases remarkably.
C2 must connect 4 μ F or more.
- C3** Holdup capacitor : 220-2200 μ F
Since holdup capacitor is not built-in, install electrolytic capacitor C3 (220 - 2200 μ F) close to the output pins. The rated ripple current of C3 and the holdup time for module should be considered. The capacitor value should be within 220 to 2200 μ F to avoid failure.
If the ambient temperature is below -20°C, Holdup capacitors ESR increases remarkably.
Therefore, be sure to verify characteristics by actual evaluation.
- C4** Y-capacitor : 2200pF
Install an external capacitor C4 (2200pF) to keep stable operation. Use AC250V rated voltage with safety approved capacitor.
- R1** Inrush current protection resistor : 4.7 - 22 Ω
Connect a resistor between R pin and +Vout pin for inrush current protection. The surge capacity is required for R1, please contact component mfg. Wirewound resistor with thermal cut-offs type is required.

1.3 Wiring input pin

- A noise filter is not built in this power supply. Connect an external noise filter to reduce the conducted noise to the power supply line.
- A fuse to protect input is not built in. To assure safety, install a slow-blow fuse of 15A maximum to the input circuit F1.

1.4 Connection of loaded circuit

- For connecting the DBS/DHS series, see Fig.1.1.
For details of F2, LF1 and C5, refer to the instruction manual for the DBS/DHS series.
LF1 may not be required, depending on the noise standard or the design of the printed circuit board. In this case, ENA and RC1 can be directly connected, without having PC1.
- Control load current so that it may flow only when the terminal ENA is at "L". At "H" when inrush current protection circuit is not released, excessive current may be applied to the circuit.
- For connection of loads except the series DBS/DHS, please contact Cosel development department.

1.5 Heatsink

■The power supply adopts the conduction cooling system. Attach a heatsink to the aluminum base plate to cool the power supply for use.

Refer to "Derating".

2 Function

2.1 Overcurrent protection

■The overcurrent protection circuit is not built-in.

2.2 Overvoltage protection

■The overvoltage protection circuit is built-in. The AC input should be shut down if overvoltage protection is in operation. When this function operates, the power factor corrector function does not operate, and output voltage becomes the full-wave rectified AC input voltage.

Remarks:

Please note that the unit's internal components may be damaged if excessive voltage (over rated voltage) is applied to output terminal of power supply. This could happen when the customer tests the overvoltage performance of the unit.

2.3 Thermal protection

■Thermal protection circuit is built-in and it operates about 115°C. If this function comes into effect, shut down the output, eliminate all possible causes of overheating, and drop the temperature to normal level. To prevent the unit from overheating, avoid using the unit in a dusty, poorly ventilated environment.

When this function operates, the power factor corrector function does not operate, and output voltage becomes the full-wave rectified AC input voltage and ENA output changes into "H".

2.4 Auxiliary power supply circuit for external signal (AUX)

- Shortprotection resistance (2.2kΩ) is built in. Output voltage decreases as the output current increases.
- Never let a short circuit occur between the AUX pin and other pins. It may damage the unit.

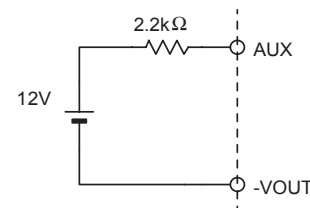


Fig.2.1 AUX circuit

2.5 Enable signal (ENA)

- Use ENA to control starting of the loaded power supply.
- When inrush current protection circuit is released, ENA outputs "LOW".
- If load current flows without releasing of the circuit, the resistor may be burnt.

Table 2.1 Specification of TMP, IOG

No.	Item	ENA
1	Function	Output possible "L"
		Output prohibited "H"
2	Base pin	-VOUT
3	Level voltage "L"	0.6V max at 10mA
4	Level voltage "H"	Open drain
5	Maxmum sink current	10mA max
6	Maxmum applied voltage	35V max

2.6 Isolation

■For a receiving inspection, such as Hi-Pot test, gradually increase (decrease) the voltage for a start (shut down). Avoid using Hi-Pot tester with the timer because it may generate voltage a few times higher than the applied voltage, at ON/OFF of a timer.

3 Series and Parallel Operation

3.1 Series operation

■As input and output are not insulated, series operation is impossible

3.2 Parallel operation

■Parallel operation is not possible.

4 Cleaning

- Clean the product with a brush. Prevent liquid from getting into the product. Do not soak the product into liquid.
- Do not stick solvent to a name plate or a resin case. (If solvent sticks to a name plate or a resin case, it will cause to change the color of the case or to fade letters on name plate away.)
- After cleaning, dry them enough.