

DATA SHEET							Date	Sep 22,2007
Model	CQS24033-40						Temp.	25 degreeC
Test	EMI Line conduction & Radiated emission						Humid.	45 %RH
							Tested by	T.Mizuhara

LINE CONDUCTION

Model Name : CQS24033-40

Model No. :

Serial No. :

Points : 5

Detector : PEAK/QP/Ave.

Line Mode : VA/VB

Power Supply : DC 24V

Limit1: [EN 55022] Class A(QP)

Limit2: [EN 55022] Class A(Ave.)

Temp. : 25degC

Humi. : 45%RH

Date : 2007/9/22 15:17

Test Equip. : R3132,ESPC

Load Line :

Comment :

90

80

70

60

50

40

30

20

10

0

150k

300k

700k

1M

3M

7M

10M

30M

Level[dBuV]

Limit1(QP)

Limit2(Ave.)

VA(PEAK)

VB(PEAK)

VA(QP)

VA(Ave.)

VB(QP)

VB(Ave.)

Vin:DC24V

Vo:3.3V Io:40A

Frequency [MHz]	Meter Reading (Ave.) [dBuV]	Meter Reading (QP) [dBuV]	Factor [dB]	Level(Ave.) [dBuV]	Level(QP) [dBuV]	Line	Limit(Ave.) [dBuV]	Limit(QP) [dBuV]	Margin(Ave.) [dB]	Margin(QP) [dB]
0.4338	33.8	34	9.9	43.7	43.9	VA	66	79	22.3	35.1
6.0584	39.2	39	10	49.2	49	VA	60	73	10.8	24
15.1466	39.3	39.8	10.2	49.5	50	VA	60	73	10.5	23
16.011	39.4	40.8	10.2	49.6	51	VA	60	73	10.4	22
0.1609	30.4	35.1	9.8	40.2	44.9	VB	66	79	25.8	34.1

RADIATED EMISSION

Model Name : CQS24033-40

Model No. :

Serial No. :

Points : 5

Detector : PEAK/QP

Polarization : Hori. & Vert.

Power Supply : DC 24V

Limit: [EN 55022] Class A<3m>

Temp. : 25degC

Humi. : 45%RH

Date : 2007/9/22 14:50

Test Equip. : R3132,ESPC

Load Line :

Comment :

80

70

60

50

40

30

20

10

0

30M

50M

70M

100M

200M

300M

500M

700M

1000M

Level[dBuV/m]

Limit(QP)

Horizontal(PEAK)

Vertical(PEAK)

Horizontal(QP)

Vertical(QP)

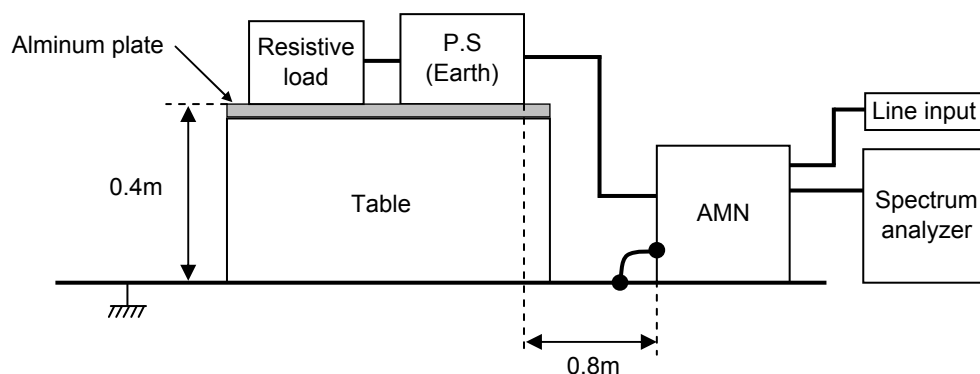
Vin:DC24V

Vo:3.3V Io:40A

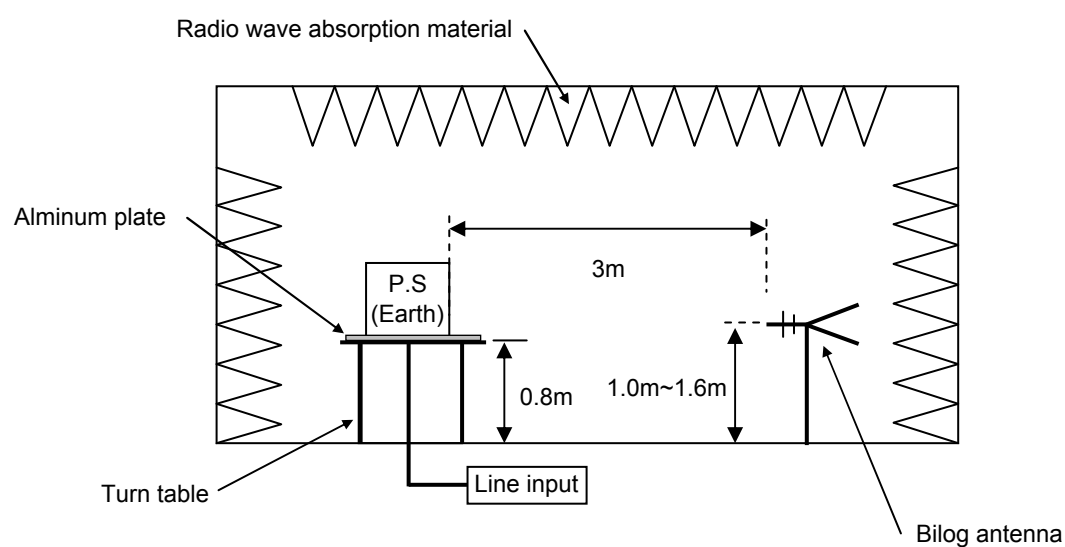
Frequency [MHz]	Meter Reading (QP) [dBuV]	Ant. Type	Antenna Factor [dB/m]	Cable & Preamp [dB]	Level(QP) [dBuV/m]	Angle [°]	Height [cm]	Polar.	Limit [dBuV/m]	Margin [dB]
154.778	56	BL	10.3	-27.6	38.7	192	154	Hori.	50	11.3
142.234	57.3	BL	10.8	-28.2	39.9	186	155	Hori.	50	10.1
36.75	57.7	BL	14.8	-30	42.5	83	103	Vert.	50	7.5
49.715	58.2	BL	7.9	-27.1	39	79	137	Vert.	50	11
48.845	57.9	BL	8.3	-27.3	38.9	152	100	Vert.	50	11.1

DATA SHEET		Date	Sep 22,2007
Model	Circuit used for measurement	Temp.	25 degreeC
Test	EMI Line conduction & Radiated emission	Humid.	45 %RH
		Tested by	T.Mizuhara

1. Line conduction



2. Radiated emission



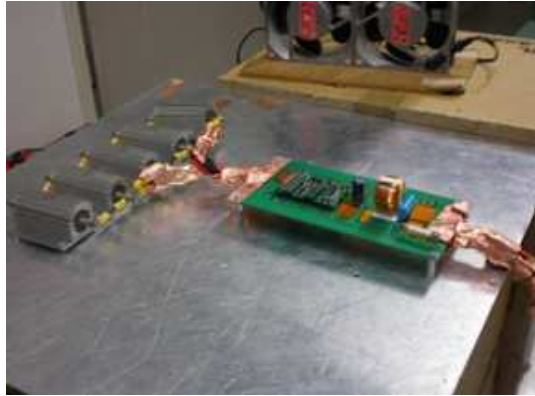
Conditions

Test : EMI

Model Name : CQS24

Photographs of Test Set-Up

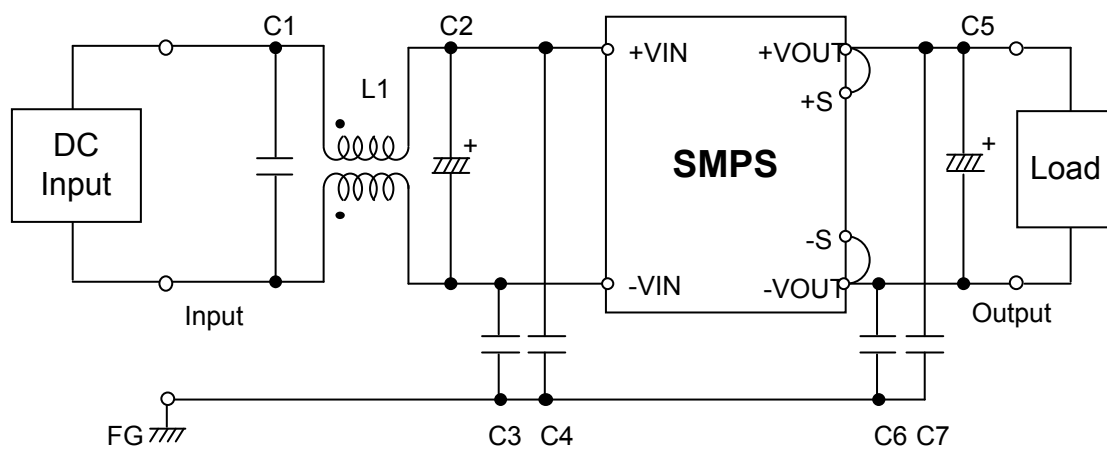
LINE CONDUCTION



RADIATED EMISSION



Testing circuitry



L1	: SC-10-10J	NEC/TOKIN	or equivalent.
C1	: 2.2 μ F 100V	Film capacitor	
C2	: 220 μ F 50V	Electric capacitor	
C3,4	: 0.068 μ F 630V	Film capacitor	
C5	: 10 μ F 25V	Electric capacitor	
C6,7	: 0.033 μ F 630V	Film capacitor	