

DATA SHEET							Date	Sep 22,2007
Model	CQS24050-28						Temp.	25 degreeC
Test	EMI Line conduction & Radiated emission						Humid.	45 %RH
							Tested by	T.Mizuhara

LINE CONDUCTION

Model Name : CQS24050-28

Model No. :

Serial No. :

Points : 5

Detector : PEAK/QP/Ave.

Line Mode : VA/VB

Power Supply : DC 24V

Limit1: [EN 55022] Class A(QP)

Limit2: [EN 55022] Class A(Ave.)

Temp. : 25degC

Humi. : 45%RH

Date : 2007/9/22 10:00

Test Equip. : R3132,ESPC

Load Line :

Comment :

90

80

70

60

50

40

30

20

10

Level[dBuV]

150k

300k

700k

1M

3M

7M

10M

30M

Frequency [Hz]

Limit1(QP)

Limit2(Ave.)

VA(PEAK)

VB(PEAK)

VA(QP)

VA(Ave.)

VB(QP)

VB(Ave.)

Vin:DC24V

Vo:5V Io:28A

Frequency [MHz]	Meter Reading (Ave.)[dBuV]	Meter Reading (QP)[dBuV]	Factor [dB]	Level(Ave.) [dBuV]	Level(QP) [dBuV]	Line	Limit(Ave.) [dBuV]	Limit(QP) [dBuV]	Margin(Ave.) [dB]	Margin(QP) [dB]
0.4266	34.4	34.6	9.9	44.3	44.5	VA	66	79	21.7	34.5
5.9813	34.9	34.7	10	44.9	44.7	VA	60	73	15.1	28.3
16.2352	39.3	39.5	10.2	49.5	49.7	VA	60	73	10.5	23.3
17.0899	39.9	40	10.2	50.1	50.2	VA	60	73	9.9	22.8
0.1655	29.6	34.3	9.8	39.4	44.1	VB	66	79	26.6	34.9

RADIATED EMISSION

Model Name : CQS24050-28

Model No. :

Serial No. :

Points : 4

Detector : PEAK/QP

Polarization : Hori. & Vert.

Power Supply : DC 24V

Limit: [EN 55022] Class A<3m>

Temp. : 25degC

Humi. : 45%RH

Date : 2007/9/22 11:35

Test Equip. : R3132,ESPC

Load Line :

Comment :

80

70

60

50

40

30

20

10

0

Level[dBuV/m]

30M

50M

70M

100M

200M

300M

500M

700M

1000M

Frequency [Hz]

Limit(QP)

Horizontal(PEAK)

Vertical(PEAK)

Horizontal(QP)

Vertical(QP)

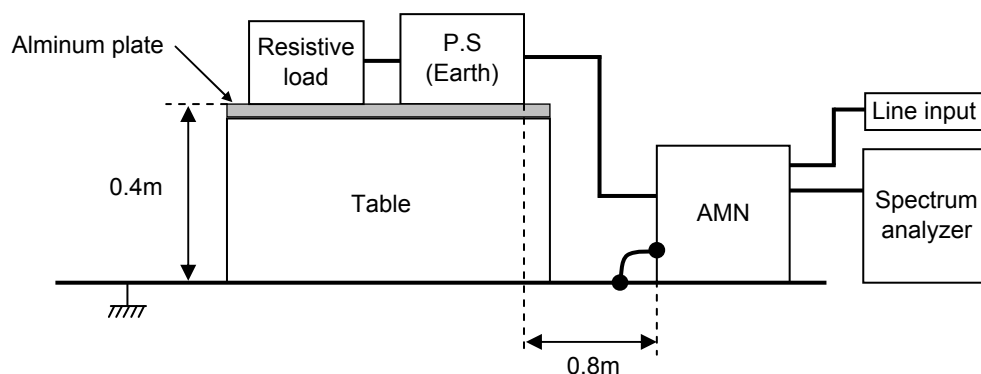
Vin:DC24V

Vo:5V Io:28A

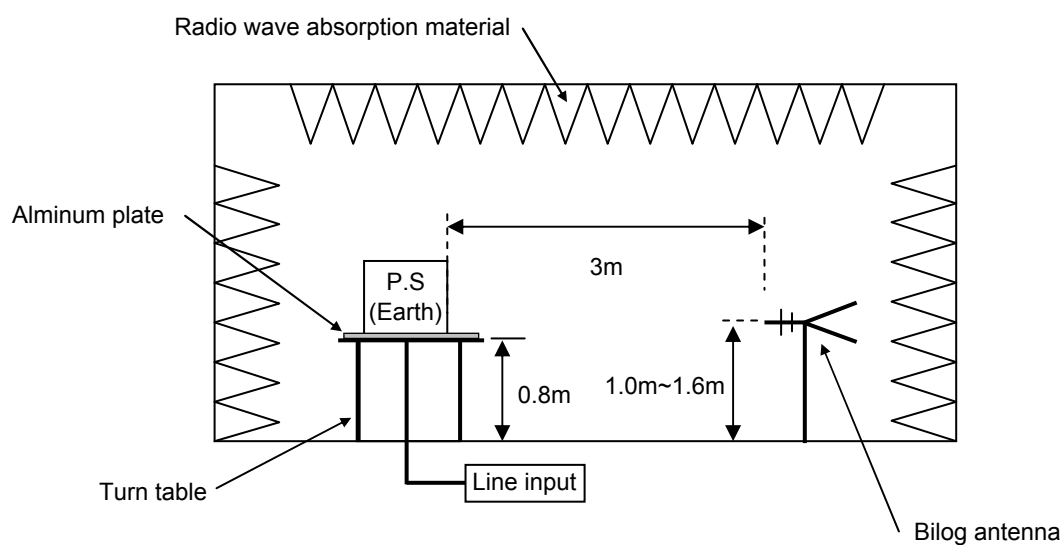
Frequency [MHz]	MeterReading (QP)[dBuV]	Ant. Type	Antenna Factor[dB/m]	Cable & Preamp[dB]	Level(QP) [dBuV/m]	Angle [°]	Height[cm]	Polar.	Limit [dBuV/m]	Margin [dB]
159.819	61.8	BL	9.9	-27	44.7	200	160	Hori.	50	5.3
160.64	61.5	BL	9.8	-26.9	44.4	197	160	Hori.	50	5.6
42.72	50.5	BL	11.5	-28.4	33.6	319	101	Vert.	50	16.4
108.558	58.3	BL	10.6	-29.9	39	262	154	Vert.	50	11

DATA SHEET		Date	Sep 22,2007
Model	Circuit used for measurement	Temp.	25 degreeC
Test	EMI Line conduction & Radiated emission	Humid.	45 %RH
		Tested by	T.Mizuhara

1. Line conduction



2. Radiated emission



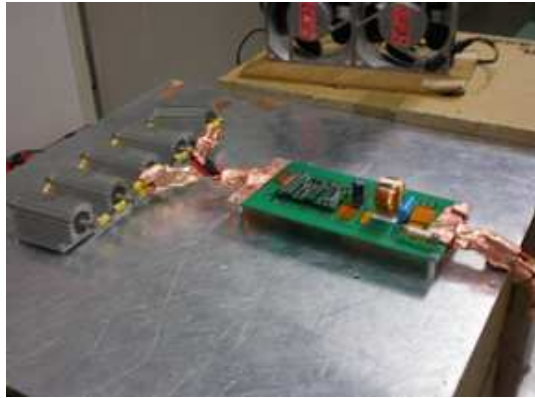
Conditions

Test : EMI

Model Name : CQS24

Photographs of Test Set-Up

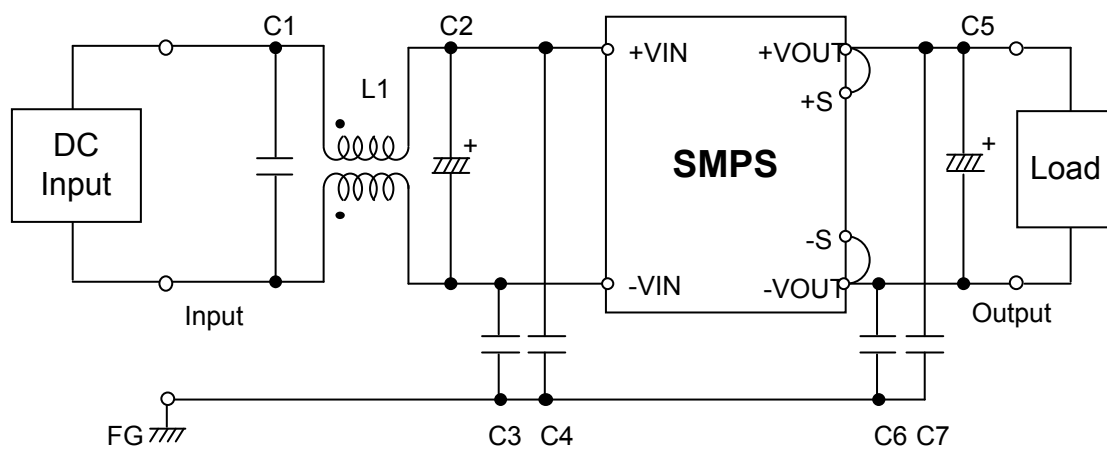
LINE CONDUCTION



RADIATED EMISSION



Testing circuitry



L1	: SC-10-10J	NEC/TOKIN	or equivalent.
C1	: 2.2 μ F 100V	Film capacitor	
C2	: 220 μ F 50V	Electric capacitor	
C3,4	: 0.068 μ F 630V	Film capacitor	
C5	: 10 μ F 25V	Electric capacitor	
C6,7	: 0.033 μ F 630V	Film capacitor	