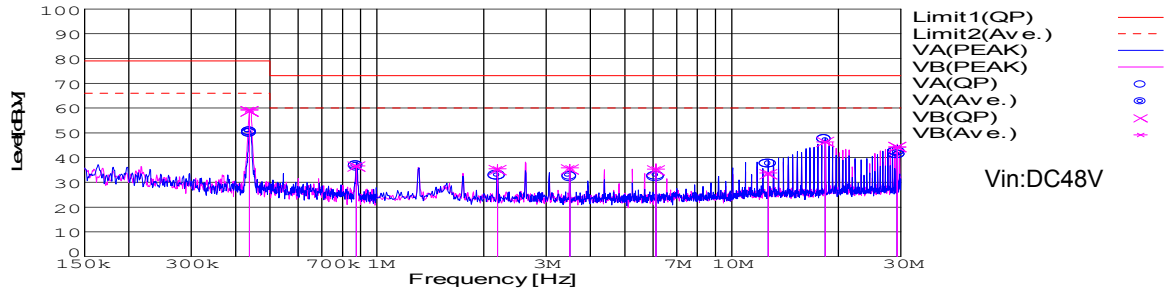


DATA SHEET		Date	2007.12.11
Model	CQS48015-50	Temp.	25 degreeC
Test	EMI Line conduction & Radiated emission	Humid.	45 %RH
		Tested by	shuuhei.sawada

LINE CONDUCTION

Model Name : CQS48015-50
 Model No. :
 Serial No. :
 Points : 8
 Detector : PEAK/QP/Ave.
 Line Mode : VA/VB
 Power Supply : DC 48V
 Limit1: [EN 55022] Class A(QP)
 Limit2: [EN 55022] Class A(Ave.)

Temp. : 25degC
 Humi. : 44%
 Date : 2007/12/11 9:41
 Test Equip. : R3132,ESPC
 Load Line : 150mm
 Comment : shuuhei.sawada

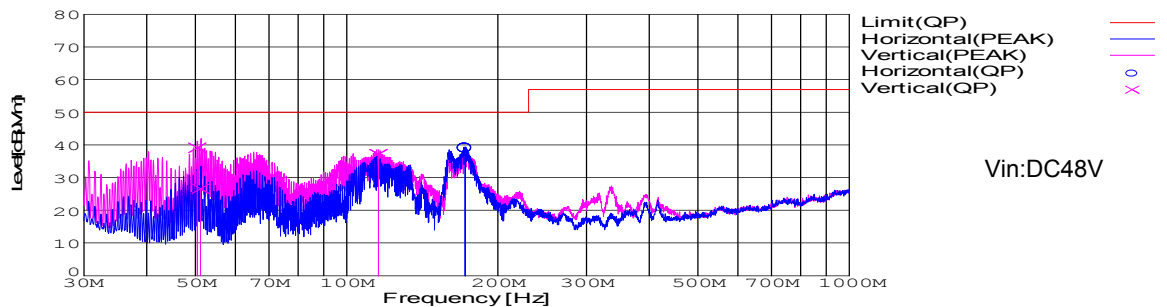


Frequency [MHz]	Meter Reading (Ave.) [dBuV]	Meter Reading (QP) [dBuV]	Factor [dB]	Level(Ave.) [dBuV]	Level(QP) [dBuV]	Line	Limit(Ave.) [dBuV]	Limit(QP) [dBuV]	Margin(Ave.) [dB]	Margin(QP) [dB]
18.3723	37.1	37.2	10.2	47.3	47.4	VA	60	73	12.7	25.6
0.4373	49.4	48.7	9.9	59.3	58.6	VB	66	79	6.7	20.4
18.3721	36.1	36.1	10.2	46.3	46.3	VB	60	73	13.7	26.7

RADIATED EMISSION

Model Name : CQS48015-50
 Model No. :
 Serial No. :
 Points : 4
 Detector : PEAK/QP
 Polarization : Hori. & Vert.
 Power Supply : DC 48V
 Limit: [EN 55022] Class A<3m>

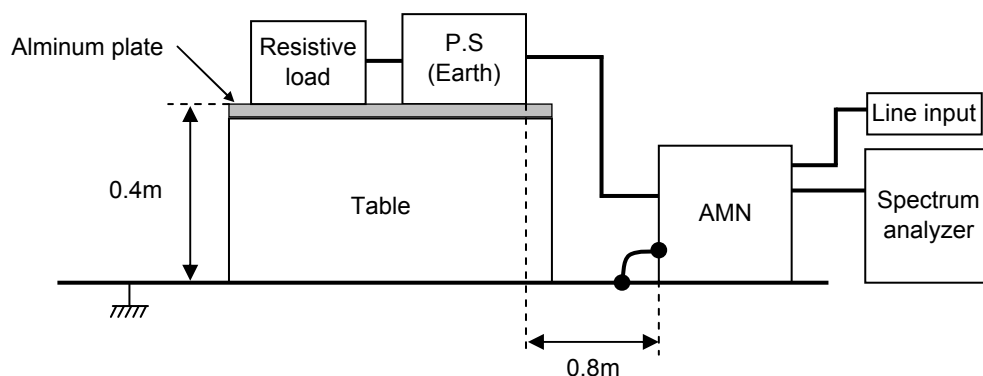
Temp. : 25degC
 Humi. : 44%
 Date : 2007/12/11 14:04
 Test Equip. : R3132,ESPC
 Load Line : 150mm
 Comment : shuuhei.sawada



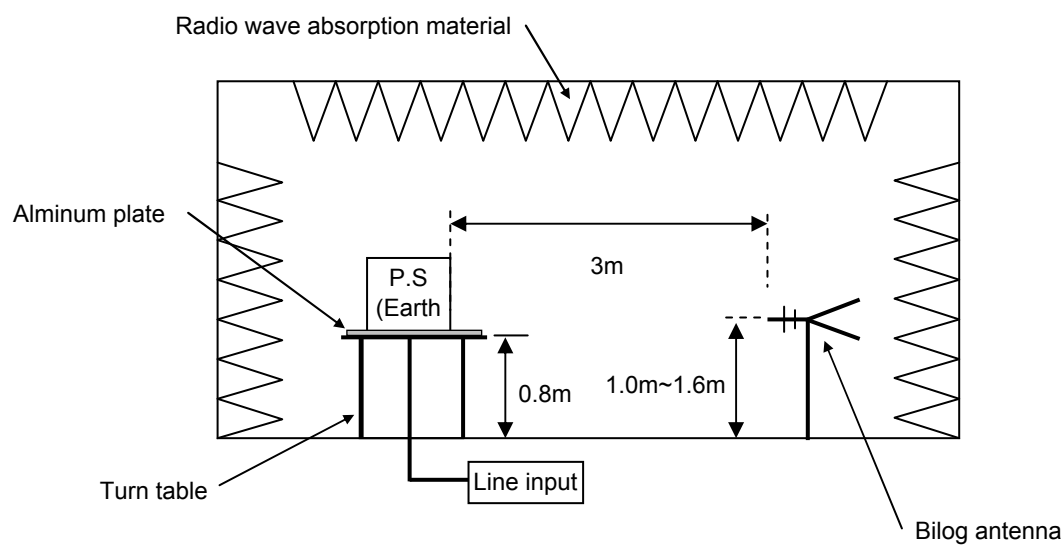
Frequency [MHz]	Meter Reading (QP) [dBuV]	Ant. Type	Antenna Factor [dB/m]	Cable & Preamp [dB]	Level(QP) [dBuV/m]	Angle [°]	Height [cm]	Polar.	Limit [dBuV/m]	Margin [dB]
172.163	61.7	BL	8.7	-31.4	39	55	160	Hori.	50	11
50.406	63.8	BL	7.5	-32.1	39.2	342	122	Vert.	50	10.8
51.194	51.5	BL	7.2	-32.1	26.6	62	160	Vert.	50	23.4
115.652	58.1	BL	10.8	-31.7	37.2	78	155	Vert.	50	12.8

DATA SHEET		Date	2007.12.11
Model	Circuit used for measurement	Temp.	25 degreeC
Test	EMI Line conduction & Radiated emission	Humid.	45 %RH
		Tested by	shuuhei.sawada

1. Line conduction



2. Radiated emission



Conditions

Test : EMI

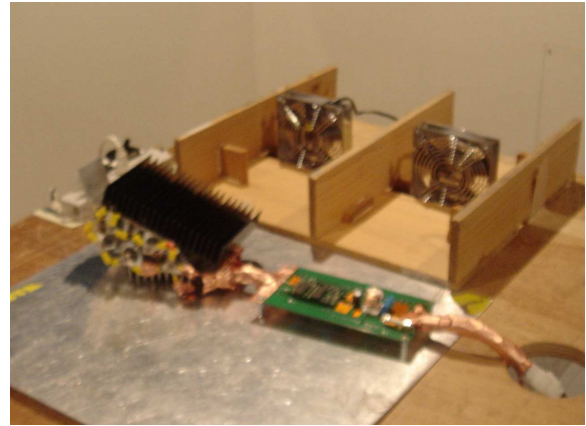
Model Name : CQS48015-50

Photographs of Test Set-Up

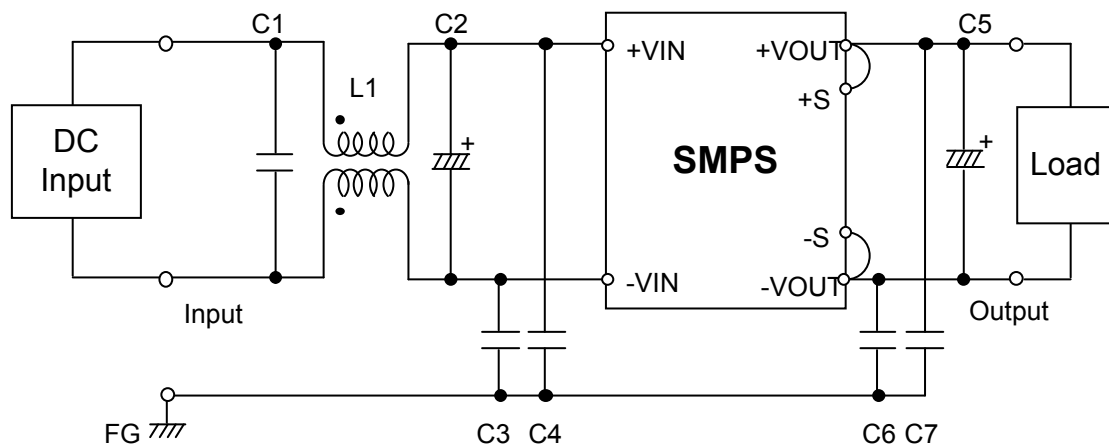
LINE CONDUCTION



RADIATED EMISSION



Testing circuitry



- L1 : 1mH 5A Inductor
- C1 : 2.2 μ F Film capacitor
- C2 : 100V 33 μ F Electric capacitor
- C3,4 : 630V 0.068 μ F Film capacitor
- C5 : 10V 10 μ F Electric capacitor
- C6,7 : 630V 0.1 μ F Film capacitor