

DATA SHEET							Date	12-Aug-03		
Model	CQS48025-45						Temp.	25 degreeC		
Test	EMI Line conduction & Radiated emission						Humid.	45 %RH		
							Tested by	R.Sakai		
LINE CONDUCTION										
Model Name : CQS48025-45			Temp. : 25							
Model No. :			Humi. : 45							
Serial No. :			Date : 2003/8/12 21:00							
Points : 1			Test Equip. : R3132,ESPC							
Detector : PEAK/QP/Ave.			Comment : R.Sakai							
Line Mode : VB			Load 100%(+2.5V 45A)							
Power Supply : DC 48V										
Limit1: [EN 55022] Class A(QP)										
Limit2: [EN 55022] Class A(Ave.)										
							Limit1(QP) ——— Limit2(Ave.) - - - VA(PEAK) ——— VB(PEAK) ——— VB(QP) × VB(Ave.) +			
							DC 48V Load 100%(+2.5V 45A)			
Frequency [MHz]	Meter Reading (Ave.)[dBuV]	Meter Reading (QP)[dBuV]	Factor [dB]	Level(Ave.) [dBuV]	Level(QP) [dBuV]	Line	Limit(Ave.) [dBuV]	Limit(QP) [dBuV]	Margin(Ave.) [dB]	Margin(QP) [dB]
0.413	44.4	44.3	9.9	54.3	54.2	VB	66	79	11.7	24.8
RADIATED EMISSION										
Model Name : CQS48025-45			Temp. : 25							
Model No. :			Humi. : 45							
Serial No. :			Date : 2003/8/12 21:47							
Points : 1			Test Equip. : R3132,ESPC							
Detector : PEAK/QP			Comment : R.Sakai							
Polarization : Vertical			Load 100%(+2.5V 45A)							
Power Supply : DC 48V										
Limit: [EN 55022] Class A<3m>										
							Limit(QP) ——— Horizontal(PEAK) - - - Vertical(PEAK) ——— Vertical(QP) ×			
							DC 48V Load 100%(+2.5V 45A)			
Frequency [MHz]	MeterReading (QP)[dBuV]	Ant. Type	Antenna Factor[dB/m]	Cable & Preamp[dB]	Level(QP) [dBuV/m]	Angle [°]	Height[cm]	Polar.	Limit [dBuV/m]	Margin [dB]
71.687	68.6	BL	5.7	-31.9	42.4	252	146	Vert.	50	7.6

COSEL

○ Testing circuitry

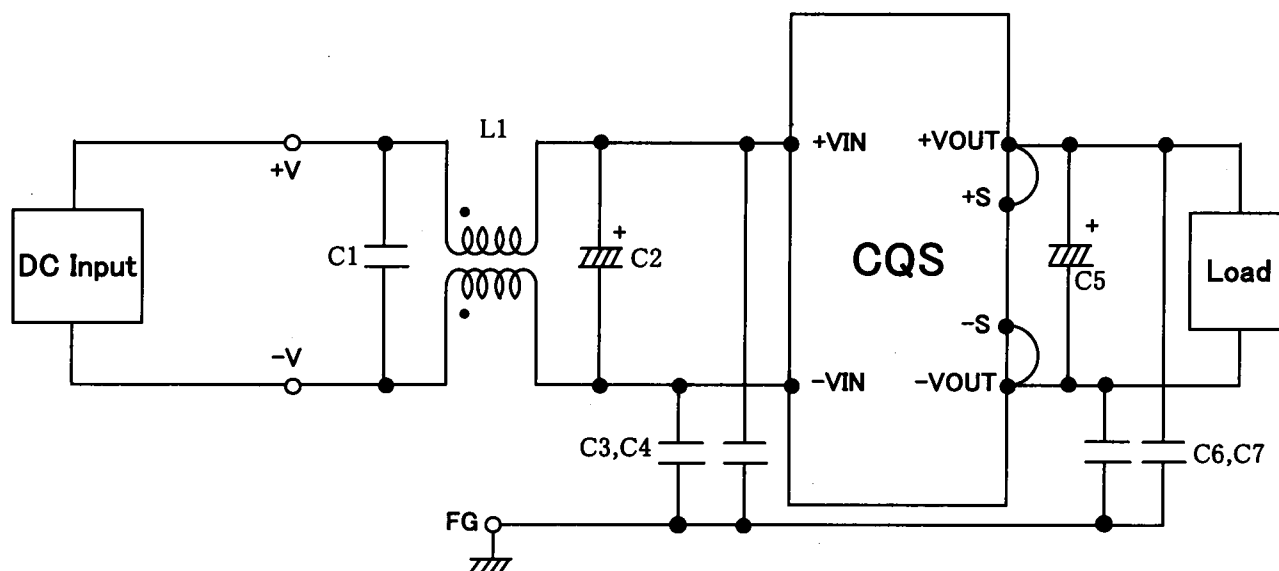


Fig.1 Testing circuitry

- L1 : 1mH SC-05-10J (TOKIN)
 C1 : 2.2 μ F MDS22A225K (NITSUKO)
 C2 : 100V 33 μ F PWseries (nichicon)
 C3,4 : 630V 0.068 μ F MDS22J683K (NITSUKO)
 C5 : 10V 10 μ F PMseries (nichicon)
 C6,7 : 630V 0.033 μ F MDS22J333K (NITSUKO)

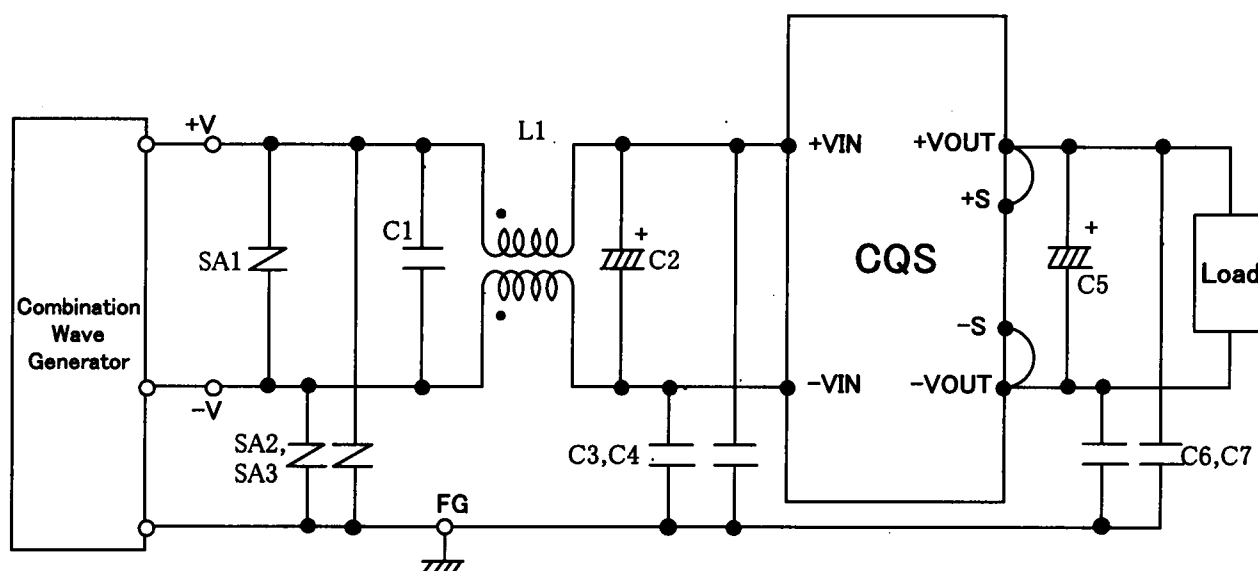


Fig.2 Surge immunity Testing circuitry

- L1 : 1mH SC-05-10J (TOKIN)
 C1 : 2.2 μ F MDS22A225K (NITSUKO)
 C2 : 100V 33 μ F PWseries (nichicon)
 C3,4 : 630V 0.068 μ F MDS22J683K (NITSUKO)
 C5 : 10V 10 μ F PMseries (nichicon)
 C6,7 : 630V 0.033 μ F MDS22J333K (NITSUKO)
 SA1~3: ERZV10D101 (100V)