

DATA SHEET							Date	23-May-08
Model	CQS48150-8						Temp.	25 degreeC
Test	EMI Line conduction & Radiated emission						Humid.	45 %RH
							Tested by	J.Hatagishi

LINE CONDUCTION

Model Name : CQS48150-8
Model No. :
Serial No. :
Points : 6
Detector : PEAK/QP/Ave.
Line Mode : VA/VB
Power Supply : DC 48V
Limit1: [EN 55022] Class A(QP)
Limit2: [EN 55022] Class A(Ave.)

Temp. : 25degC
Humi. : 45%
Date : 2008/5/23 14:57
Test Equip. : R3132,ESPC
Load Line :
Comment :

90

80

70

60

50

40

30

20

10

0

150k300k700k1M3M7M10M30M

Level[dBuV]

Limit1(QP)

Limit2(Ave.)

VA(PEAK)

VB(PEAK)

VA(QP)

VA(Ave.)

VB(QP)

VB(Ave.)

Vin:DC48V

Vo:15V Io:8A

Frequency [MHz]	Meter Reading (Ave.) [dBuV]	Meter Reading (QP) [dBuV]	Factor [dB]	Level(Ave.) [dBuV]	Level(QP) [dBuV]	Line	Limit(Ave.) [dBuV]	Limit(QP) [dBuV]	Margin(Ave.) [dB]	Margin(QP) [dB]
0.4188	43.1	42.7	9.9	53	52.6	VA	66	79	13	26.4
7.1263	36.4	36.6	10.1	46.5	46.7	VA	60	73	13.5	26.3
28.0774	40.4	40.6	10.4	50.8	51	VA	60	73	9.2	22
0.4185	45.5	45.1	9.9	55.4	55	VB	66	79	10.6	24
5.4477	37.6	37.3	10	47.6	47.3	VB	60	73	12.4	25.7
29.3347	40	40.1	10.5	50.5	50.6	VB	60	73	9.5	22.4

RADIATED EMISSION

Model Name : CQS48150-8
Model No. :
Serial No. :
Points : 5
Detector : PEAK/QP
Polarization : Hori. & Vert.
Power Supply : DC 48V
Limit: [EN 55022] Class A<3m>

Temp. : 25degC
Humi. : 45%
Date : 2008/5/23 16:45
Test Equip. : R3132,ESPC
Load Line :
Comment :

80

70

60

50

40

30

20

10

0

30M50M70M100M200M300M500M700M1000M

Level[dBuV/m]

Limit(QP)

Horizontal(PEAK)

Vertical(PEAK)

Horizontal(QP)

Vertical(QP)

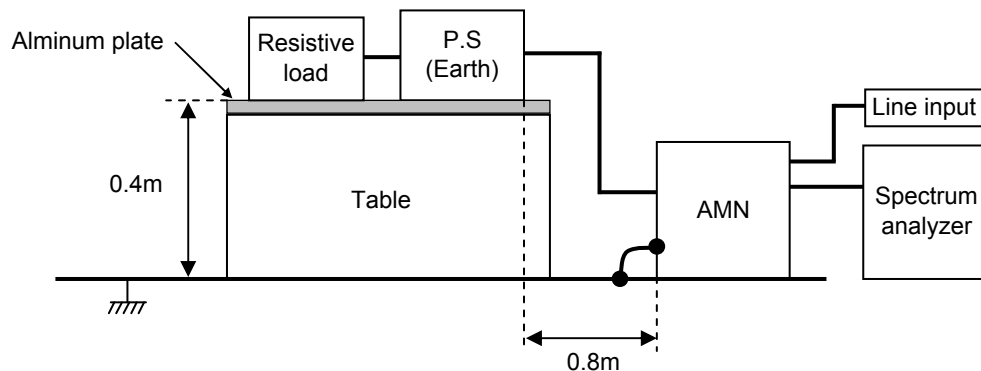
Vin:DC48V

Vo:15V Io:8A

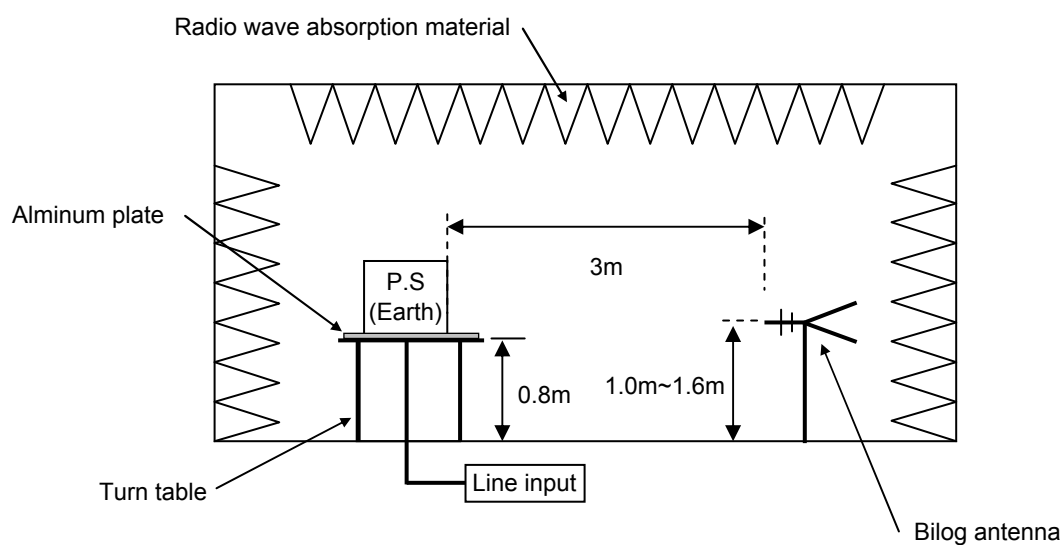
Frequency [MHz]	MeterReading (QP) [dBuV]	Ant. Type	Antenna Factor [dB/m]	Cable & Preamp [dB]	Level(QP) [dBuV/m]	Angle [°]	Height [cm]	Polar.	Limit [dBuV/m]	Margin [dB]
194.319	51.9	BL	8.4	-31.3	29	263	160	Hori.	50	21
116.008	51.5	BL	10.9	-31.7	30.7	177	153	Hori.	50	19.3
83.344	59.6	BL	7.7	-31.9	35.4	67	149	Hori.	50	14.6
31.403	50.5	BL	17.5	-32.2	35.8	6	106	Vert.	50	14.2
54.432	58	BL	5.9	-32.1	31.8	300	131	Vert.	50	18.2

DATA SHEET		Date	23-May-08
Model	Circuit used for measurement	Temp.	25 degreeC
Test	EMI Line conduction & Radiated emission	Humid.	45 %RH
		Tested by	J.Hatagishi

1. Line conduction



2. Radiated emission



Conditions

Test : EMI

Model Name : CQS48150-8

Photographs of Test Set-Up

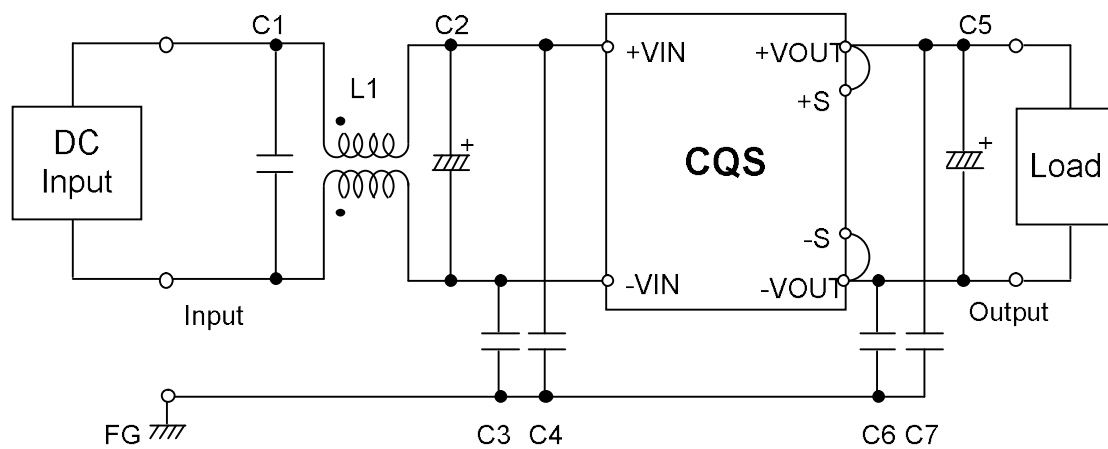
LINE CONDUCTION



RADIATED EMISSION



Testing circuitry



- L1 : 1mH 5A Inductor
- C1 : 2.2 μ F Film capacitor
- C2 : 100V 33 μ F Electric capacitor
- C3,4 : 630V 0.068 μ F Film capacitor
- C5 : 25V 10 μ F Electric capacitor
- C6,7 : 630V 0.1 μ F Film capacitor